

Light efficiency:

109 Lumen/Watt

Light quality:

CRI: 81.9

Color temperature:

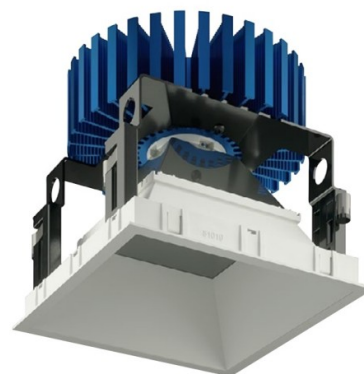
3025 K

Output: 4350 lm

Peak: 2481 cd

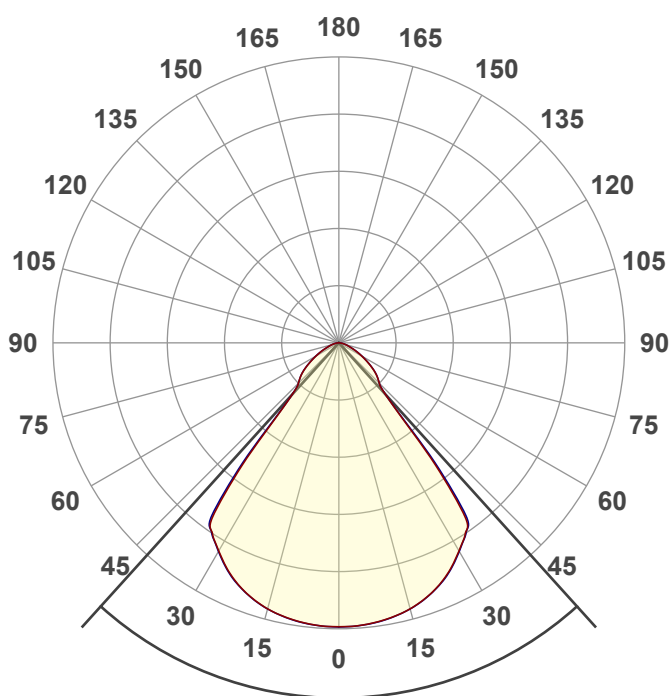
Power: 39.9 W

PF: 0.98



NU6-QD-SW-45LM-30K-80-WH80-WH-WH

Date and time:  
9/7/2022 10:25:42 AM



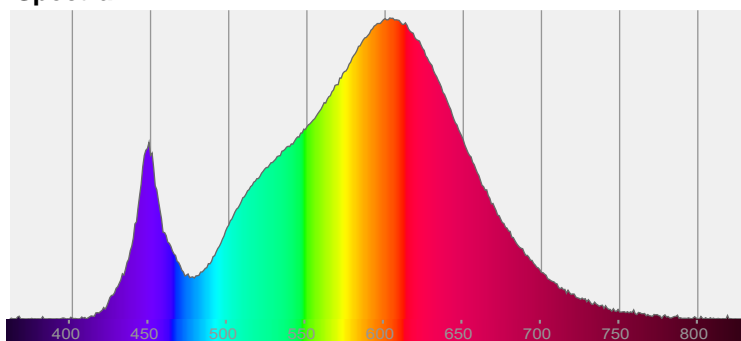
Beam angle

84.2°

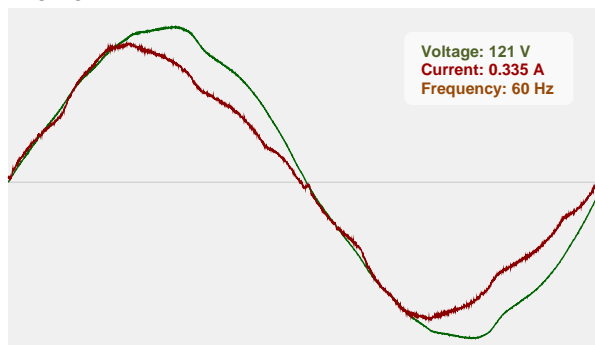


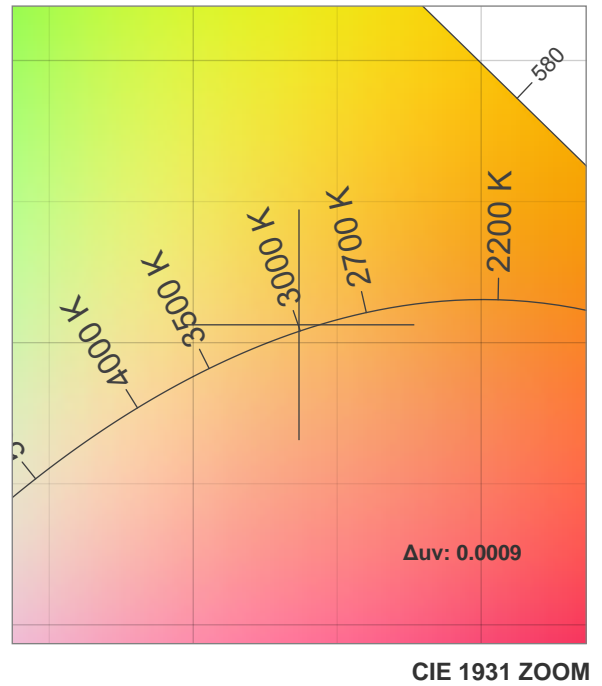
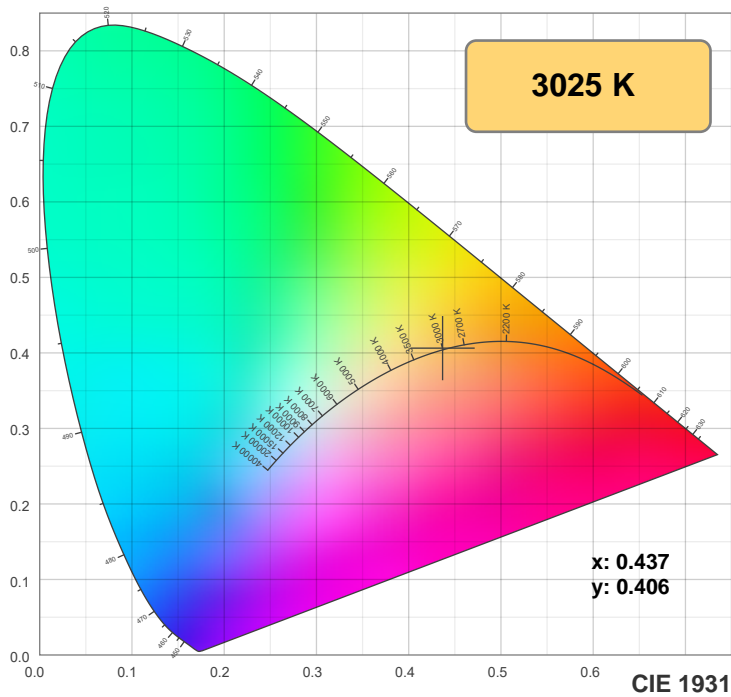
CIE 1931  
x: 0.437  
y: 0.406

Spectra

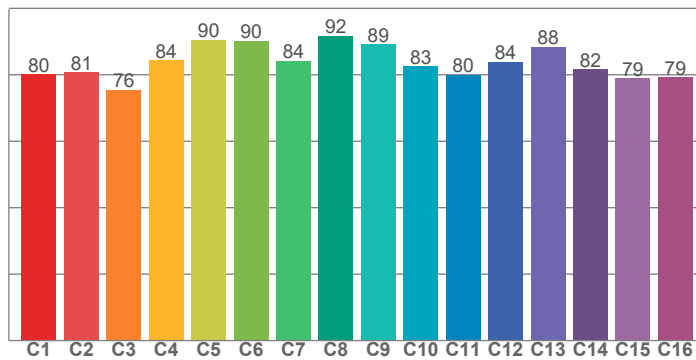


Power

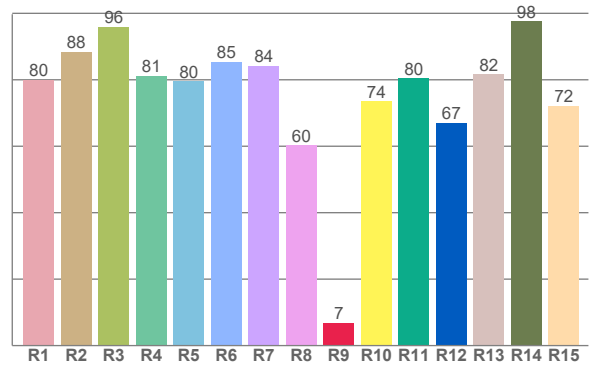




TM30: 83.8



CRI: 81.9 (R1-R8)



CRI R values, only R1-R8 are used to calculate final CRI value

R1	R2	R3	R4	R5	R6	R7	R8	R9	R10	R11	R12	R13	R14	R15
80.0	88.5	96.0	81.2	79.7	85.4	84.2	60.3	6.9	73.5	80.4	67.1	81.7	97.6	72.2

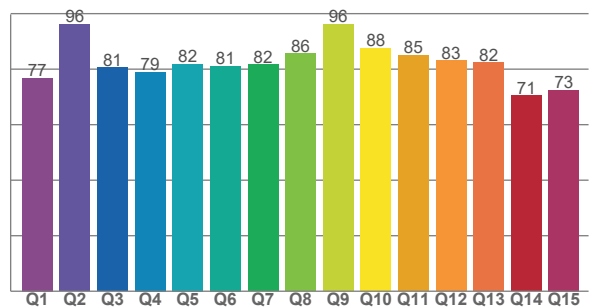
TM30 C values, 16 binned values out of total of 99 C values

C1	C2	C3	C4	C5	C6	C7	C8	C9	C10	C11	C12	C13	C14	C15	C16
80.1	80.7	75.5	84.3	90.5	90.1	84.2	91.7	89.2	82.5	79.9	84.0	88.4	81.6	79.0	79.2

CQS Q values

Q1	Q2	Q3	Q4	Q5	Q6	Q7	Q8	Q9	Q10	Q11	Q12	Q13	Q14	Q15
76.7	96.2	80.6	79.0	81.8	81.2	81.7	85.7	96.1	87.5	85.0	83.1	82.3	70.5	72.6

CQS: 81.2



## Color parameters

Color temperature	Color rendering index	Red component	Color fidelity	Color gamut	Color quality scale	Color coordinate cie 1931	Color coordinate cie 1931	Color coordinate	Color coordinate	Color deviation from black body
CCT	CRI	CRI R9	TM30 Rf	TM30 Rg	CQS	x	y	u	v	Δuv
3025 K	81.9	6.9	83.8	97.5	81.2	0.437	0.406	0.249	0.348	0.0009

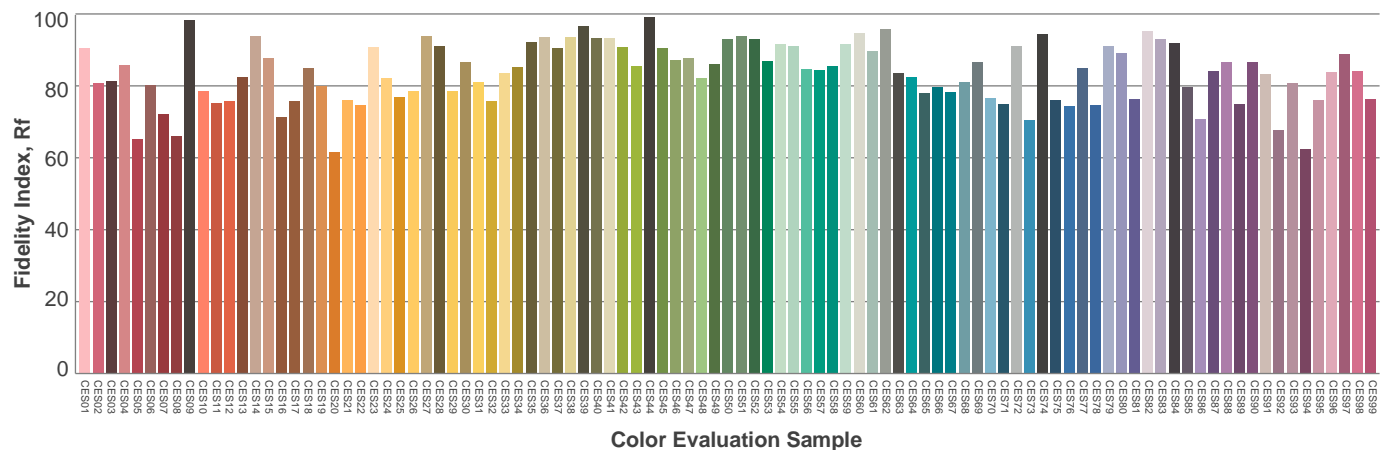
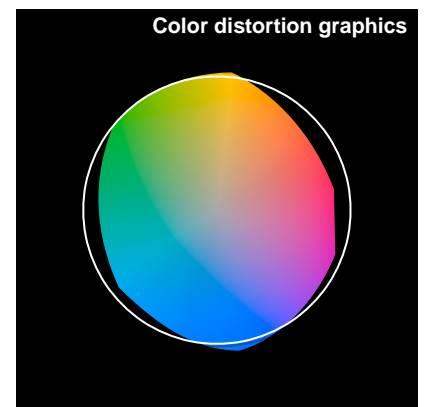
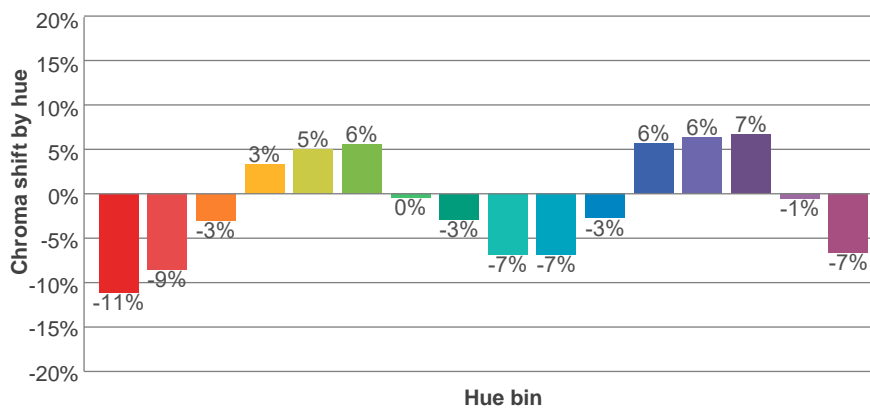
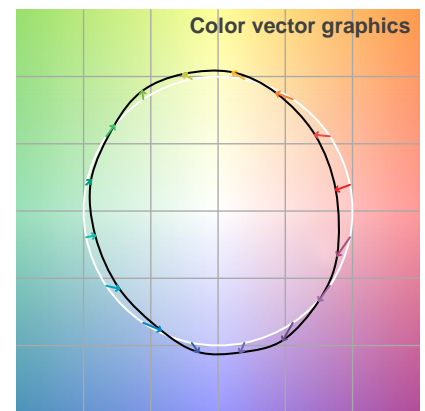
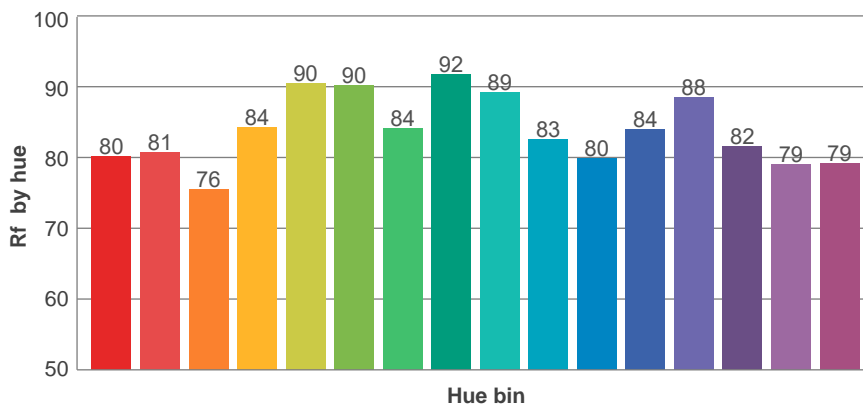
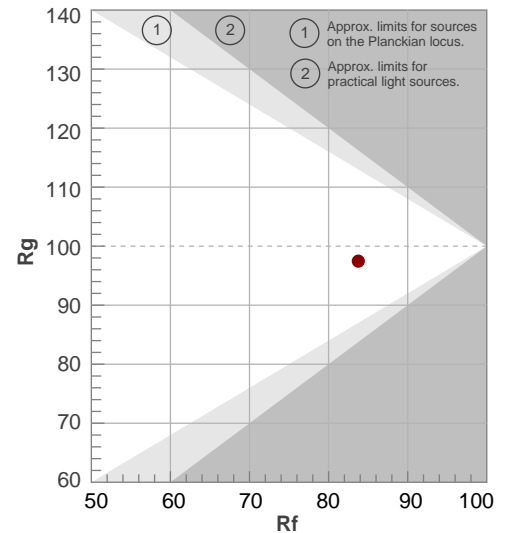
**Rf 83.8**

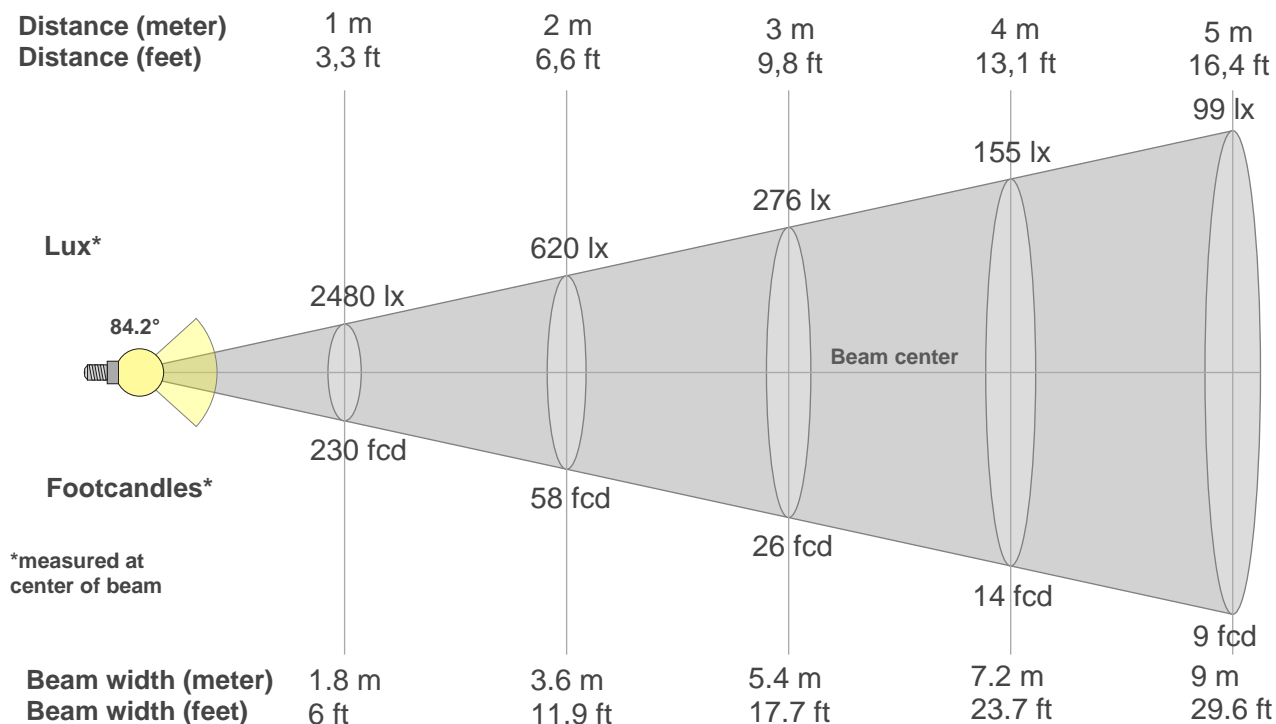
Fidelity index Rf

**Rg 97.5**

Gammut index Rg

Hue Bin	R <sub>f</sub>	Graphic shifts (%)	
		Chroma	Hue
1	80	-11%	-2%
2	81	-9%	7%
3	76	-3%	13%
4	84	3%	10%
5	90	5%	5%
6	90	6%	-3%
7	84	0%	-10%
8	92	-3%	-4%
9	89	-7%	0%
10	83	-7%	7%
11	80	-3%	14%
12	84	6%	6%
13	88	6%	-4%
14	82	7%	-13%
15	79	-1%	-14%
16	79	-7%	-15%





#### Beam intensities from 1-20m

1m	2m	3m	4m	5m	6m	7m	8m	9m	10m	11m	12m	13m	14m	15m	16m	17m	18m	19m	20m
3.3ft	6.6ft	9.8ft	13.1ft	16.4ft	19.7ft	23ft	26.2ft	29.5ft	32.8ft	36.1ft	39.4ft	42.7ft	45.9ft	49.2ft	52.5ft	55.8ft	59.1ft	62.3ft	65.6ft
2480lx	620lx	276lx	155lx	99lx	69lx	51lx	39lx	31lx	25lx	20lx	17lx	15lx	13lx	11lx	10lx	9lx	8lx	7lx	6lx
230.4fcd	57.6fcd	25.6fcd	14.4fcd	9.2fcd	6.4fcd	4.7fcd	3.6fcd	2.8fcd	2.3fcd	1.9fcd	1.6fcd	1.4fcd	1.2fcd	1fcd	0.9fcd	0.8fcd	0.7fcd	0.6fcd	0.6fcd

#### Intensities in 0° c-plane

0°	5°	10°	15°	20°	25°	30°	35°	40°	45°	50°	55°	60°	65°	70°	75°	80°	85°	90°	95°
2480	2471	2446	2403	2333	2231	2097	1926	932	504	422	325	232	156	98	63	37	15	1	1
100%	100%	99%	97%	94%	90%	85%	78%	38%	20%	17%	13%	9%	6%	4%	3%	1%	1%	0%	0%

#### Intensities in 90° c-plane

0°	5°	10°	15°	20°	25°	30°	35°	40°	45°	50°	55°	60°	65°	70°	75°	80°	85°	90°	95°
2480	2472	2448	2404	2335	2237	2102	1939	1002	504	423	326	233	157	97	62	35	14	1	0
100%	100%	99%	97%	94%	90%	85%	78%	40%	20%	17%	13%	9%	6%	4%	2%	1%	1%	0%	0%

#### Intensities in 180° c-plane

0°	5°	10°	15°	20°	25°	30°	35°	40°	45°	50°	55°	60°	65°	70°	75°	80°	85°	90°	95°
2480	2471	2446	2403	2333	2231	2097	1926	932	504	422	325	232	156	98	63	37	15	1	1
100%	100%	99%	97%	94%	90%	85%	78%	38%	20%	17%	13%	9%	6%	4%	3%	1%	1%	0%	0%

#### Intensities in 270° c-plane

0°	5°	10°	15°	20°	25°	30°	35°	40°	45°	50°	55°	60°	65°	70°	75°	80°	85°	90°	95°
2480	2472	2448	2404	2335	2237	2102	1939	1002	504	423	326	233	157	97	62	35	14	1	0
100%	100%	99%	97%	94%	90%	85%	78%	40%	20%	17%	13%	9%	6%	4%	2%	1%	1%	0%	0%

Beam angle 50%	Field angle 10%	Cutoff angle 2,5%	Intensity ratio in 120° cone	Intensity ratio in 90° cone
84.2°	119.7°	150.5°	94.2%	81.2%